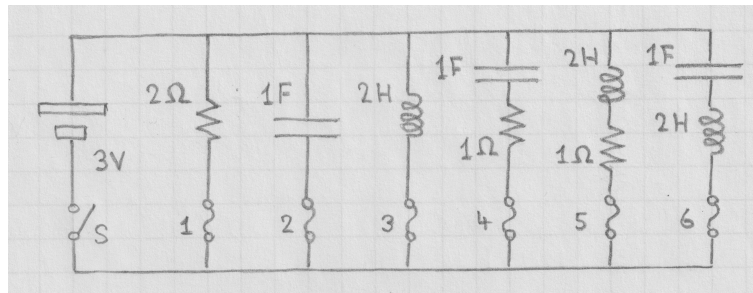


[lex88] Circuit breaker contest I

When the switch S is closed at time $t = 0$, each of the six branches in this circuit is connected to a 3V voltage source. The fuse in a branch has zero impedance when intact and breaks when the current exceeds the value 2A.

Find the times t_1, \dots, t_6 when the fuses 1 through 6 break. Only one of the fuses stays intact.



Solution: