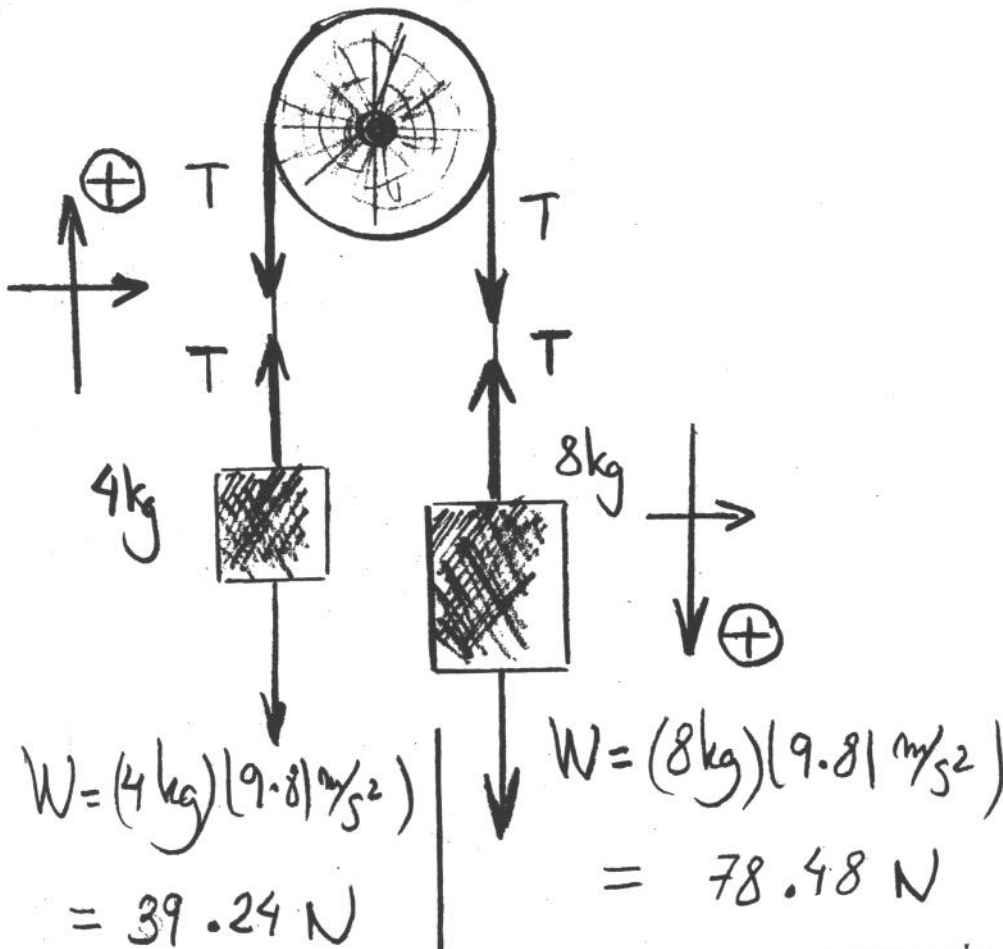


# Problems

- 1) Two blocks of 4 kg and 8 kg hang from a massless pulley (see figure below). Find the acceleration of the blocks and the tension of the string.



$T - 39.24 = 4a$	$78.48 - T = 8a$
------------------	------------------

→  $78.48 - 39.24 = 12a$

$$a = \frac{39.24}{12} \text{ m/s}^2 = 3.27 \text{ m/s}^2$$

$$T = 4a + 39.24 = 13.08 + 39.24 = 52.32 \text{ N}$$